

HIOS®

NEW

in Just 30 Seconds



Anyone can be a skilled craftsman

熟練工[®] JUKUREN

- From analogue to digital -

Brushless® Screwdriver

Screw Counter / Pulse Counter*

熟練工 BLG-ZERO1

JUKUREN “BLG-ZERO1” the digitally controlled screwdriver detects screw fastening errors. Even a beginner can easily operate it with a simple 3-step settings.

* Digitally controlled system by counting the number of rotation pulses of the motor

■ Direct Teaching

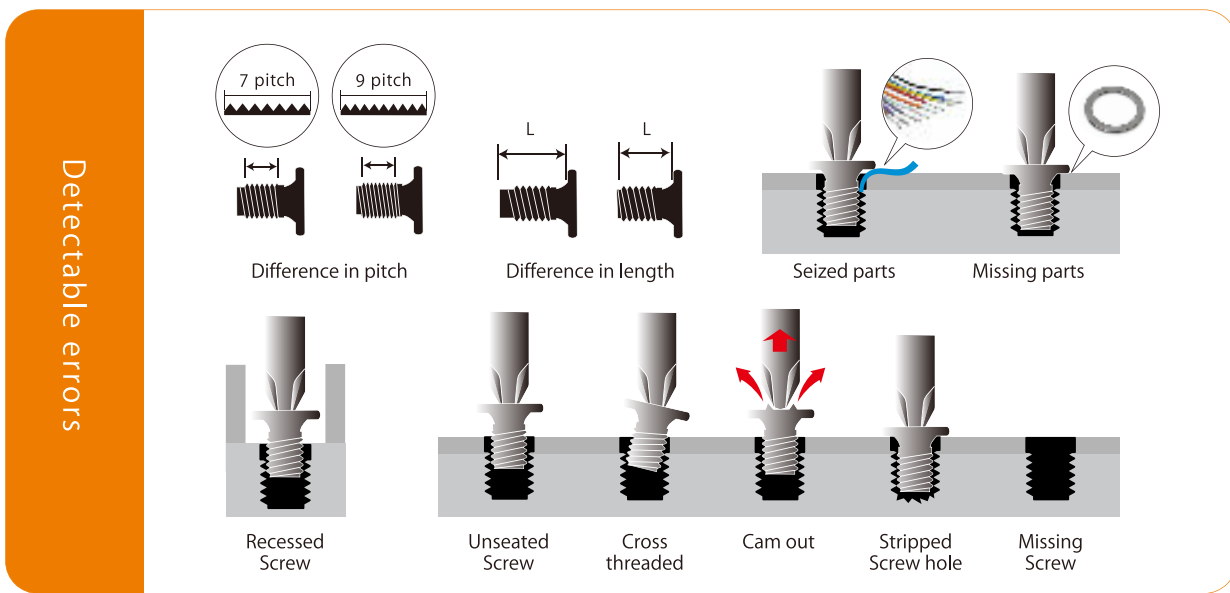
Setting can be easily done by pressing a button. Time and effort for setting will be significantly saved by directly fastening several screws into the work pieces and allowing the driver to automatically learn the number of rotating pulses of the motor (the setting value is +10% of the maximum count and -10% of the minimum count) from the start to the completion of screw fastening.

■ Pulse System

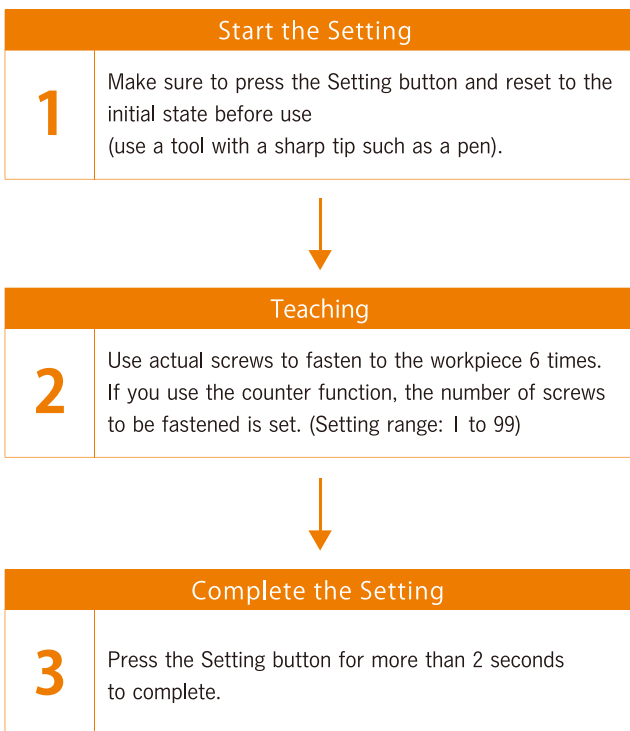
By counting the number of rotating pulses of the motor, the system precisely judges screw fastening errors such as the mixing of a wrong type of screw, a floating screw, a Cam out recess, a stripped screw hole and a cross threaded screw.

■ Screw Counter

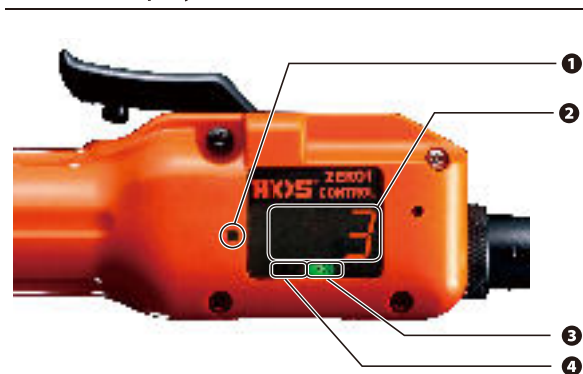
It displays the remaining number of screws to fasten every time a screw is fastened.



Simple 3-step Setting



Counter Display Section



1 Setting Button

To enter the teaching mode and set the number of screws to fasten.

2 Display Section

Screw fastening count or an error code is displayed.

3 Pass Light

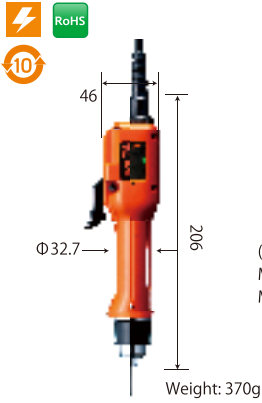
When the screw fastening result is "OK", the green LED light turns ON.

4 Fail Light

When the screw fastening result is "NG," the red LED light turns ON.

Screwdriver specifications

Lever start type
BLG-4000ZERO1



Lever and Push-to start (two-way)
BLG-5000ZERO1



Lever and Push-to start (two-way)
BLG-5000ZERO1-15
(Revolution speed: 1.500 r.p.m)



Lever and Push-to start (two-way)
BLG-5000ZERO1-18
(Revolution speed: 1.800 r.p.m)



Lever and Push-to start (two-way)
BLG-5000ZERO1-HT
(Torque range: 0.5 to 2.0N·m)



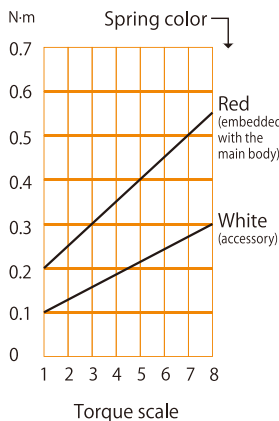
Model		BLG-4000ZERO1	BLG-5000ZERO1	BLG-5000ZERO1-15	BLG-5000ZERO1-18	BLG-5000ZERO1-HT
Output Torque Range	N·m	0.1-0.55	0.2-1.2	0.3-1.0	0.5-1.5	0.5-2.0
	(kgf·cm)	(1-5.5)	(2-12)	(3-10)	(5-15)	(5-20)
Torque Switching		Stepless adjustment	Stepless adjustment	Stepless adjustment	Stepless adjustment	Stepless adjustment
Unloaded Rotation Speed (rpm) ±10%	HI	1,000	1,000	1,500	1,800	730
	LOW	690	690	1000	1,200	
Screw Size (mm)	Machine Screw	1.4-2.6	2.0-3.0	2.3-3.0	2.3-3.0	2.0-4.0
	Tapping Screw	1.4-2.3	2.0-3.0	2.0-2.6	2.0-2.6	2.0-3.0
Drive size	HIOS Shank	H4	H4	H4	H5&5HEX	H5&5HEX
	Hexagonal Shank	1/4HEX	H5&5HEX & or 1/4HEX	H5&5HEX & or 1/4HEX	1/4HEX	1/4HEX
Power Supply	T-45BL	○	○	○*	—	○*
	T-70BL	○	○	○	○	○*
Accessories	Bit type	H4	+ #0(Φ2.5×40mm) + #1(Φ4.0×40mm)	+ #1(Φ4.0×40mm) + #2(Φ4.0×40mm)	+ #1(Φ4.0×40mm) + #2(Φ4.0×40mm)	+ #1(Φ5.0×60mm) + #2(Φ5.0×60mm)
		H5				+ #1(Φ5.0×60mm) + #2(Φ5.0×60mm)
	Spring	White				
	Cord length (m)	2m(6P)				
HEX L-wrench		WAF: 5mm (1pc)				

*(Note) Use only 2 (HI) power outlet with the * models. These models may not perform properly on 1 (LOW) power outlet.

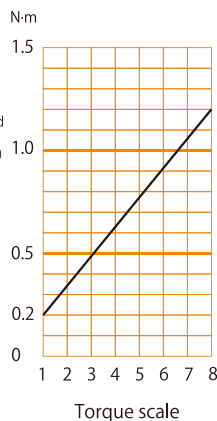
●If you order a driver with HIOS Shank H5, φ5.0X60mm sized bits for ⊕ #1 & 2 will be attached. ●If you order a driver with Hexagonal Shank, no bits will be attached.

Output torque guide (HI input)

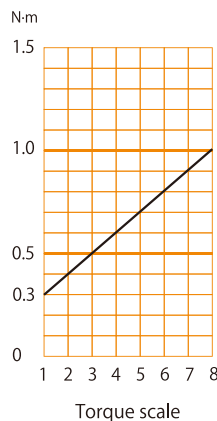
BLG-4000ZERO1



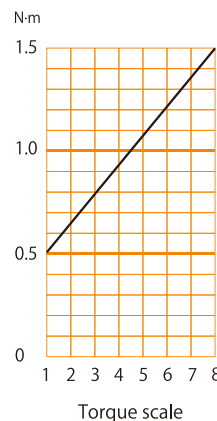
BLG-5000ZERO1



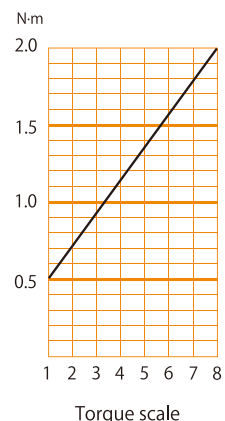
BLG-5000ZERO1-15



BLG-5000ZERO1-18



BLG-5000ZERO1-HT

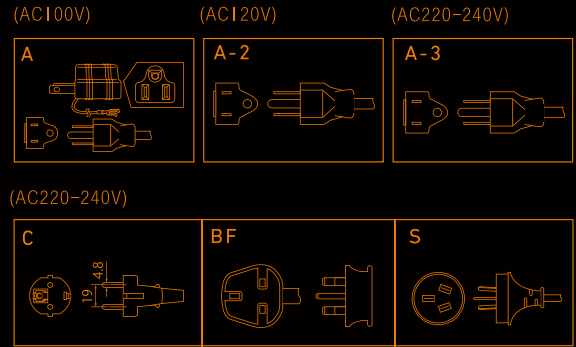


*For the Torque Adjustment spring for BLG-4000ZERO1, two types are available. One is for high torque (embedded in the main body) and the other one is for low torque. Please select a suitable one for your application.

Power supply for Brushless screwdrivers

Number of connectable screwdrivers		
Power supply	1 unit	
Screwdriver	T-45BL	T-70BL
BLG-4000ZERO1	●	●
BLG-5000ZERO1	●	●
BLG-5000ZERO1-15	● *	●
BLG-5000ZERO1-18	—	●
BLG-5000ZERO1-HT	● *	● *

Plug type



* (Note) Use only 2 (H) power outlet with the * models. These models may not perform properly on 1 (LOW) power outlet.

Model: T-45BL (for one screwdriver)	
Primary input power source	AC100-240V (47-63 Hz)
Secondary output voltage	HI(2): DC30V、LOW(1): DC20V 2-step switchable
External dimensions (mm)	71.5(W)×146(D)×42.6(H) mm
Weight (g)	320 g
Accessories	AC cord 1.8m (1pc), Flat 2P conversion plug (1pc) (only for100V), Mounting hardware (2 pcs), Mounting screw (4 pcs)
Plug Type	A A-2 A-3/C/BF/S

*Only one type of AC cord and plug are attached as accessories.

Model: T-70BL (for one screwdriver)	
Primary input power source	AC100-240V (47-63 Hz)
Secondary output voltage	HI(2): DC30V、LOW(1): DC20V 2-step switchable
External dimensions (mm)	88(W)×210(D)×52(H) mm
Weight (g)	685 g
Accessories	AC cord 1.8m (1pc), Flat 2P conversion plug (1pc) (only for100V), Mounting hardware (2 pcs), Mounting screw (4 pcs)
Plug Type	A A-2 A-3/C/BF/S

*Only one type of AC cord and plug are attached as accessories.



Because it is an extensible screwdriver,
Upgrading is Possible!



A customer who purchased BLG-ZERO1 can easily upgrade the existing model, as the BLG Series evolves with more functionality (it will be a paid service). Please feel free to contact us about upgrading.

HIOS Inc.

Head Office: 1-16-5 Akiyama, Matsudo City, Chiba Pref., Japan 270-2223 Phone: +81 (Japan) 47-392-2001
 Osaka Office: 18F Naniwasuji SIA Bldg., 2-4-2 Shinmachi, Nishi-ku, Osaka City, Japan 550-0013 Phone: +81 (Japan) 6-6533-0903
 Nagoya Office: 9F Kirix Marunouchi Bldg., 1-17-19 Marunouchi, Naka-ku, Nagoya, Aichi Pref., Japan 460-0002 Phone: +81 (Japan) 52-219-5566
 Yamagata Factory: 5 Takagi, Yamagata City, Yamagata Pref., Japan 990-2346 Phone: +81 (Japan) 23-645-8100
 HIOS (Shenzhen) Co., LTD. 11CD Room New Times Plaza, 1 Taizi Road, Shekou Nanshan District, Shenzhen, Guangdong Province, China 518067
 Phone: +86 (China) 755-26674278

